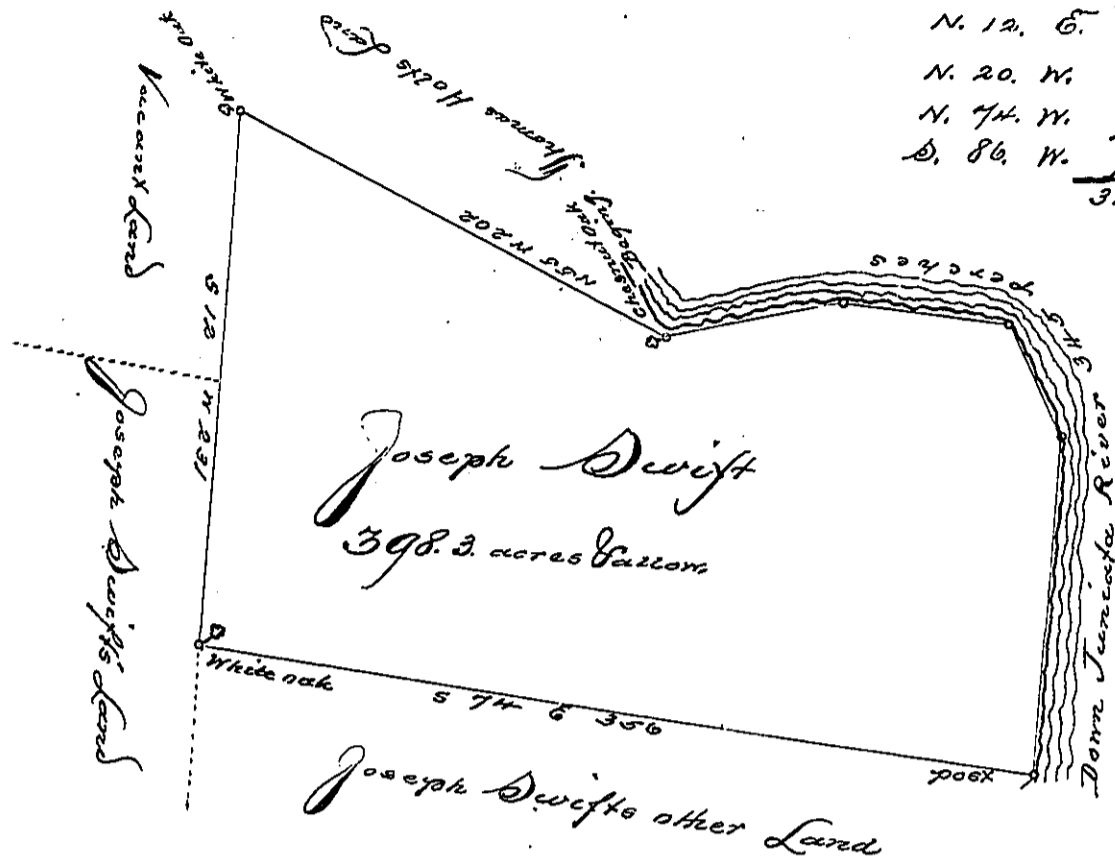


Courses and Distances

Down Juniata

N. 12. E.	148.
N. 20. W.	52.
N. 74. W.	72.
S. 86. W.	73.
<hr/>	
	345



The Draught of a Tract of Land called *unnamed* on the north side of Juniata River near Fort Granville in the County of Cumberland containing Three Hundred ninety eight acres Fifty perches with the usual allowance of six acres 70 cents for Roads. Surveyed the 18<sup>th</sup> day of Nov: 1767. For Joseph Swift. In pursuance of a Warrant from the Honble Prop<sup>s</sup>. Bearing date at Philad<sup>a</sup>. the 30<sup>th</sup> day of October Anno Dom. 1765.

J. Wm Macclay A.S.

To John Lukens Esqr. Secy. of Pennsylvania

IN TESTIMONY that the above is a copy of the original remaining on file in the Department of Internal Affairs of Pennsylvania, made conformably to an Act of Assembly approved the 16th day of February, 1833, I have hereunto set my Hand and caused the Seal of said Department to be affixed at Harrisburg, this Seventh day of June, 1898.

*James W. Patton*  
 Secretary of Internal Affairs.